

# NLP & Learning

2010 - 2011

our 120 hour **FULL** NLP Practitioner programme

## What do you get for your money?

- outstanding trainers whose knowledge is continually updated and influenced by *the* major developers
- a quality programme which has been honed over 10 years and consistently delivers its objectives
- original thinking, materials, and exercises not found elsewhere
- targeted pre-course materials to prime your thinking and expectations
- 150 page manual, full of background information, explanations and instructions
- self assessment knowledge quizzes
- your Readiness for Learning analysis
- inventive teaching approaches
- a scuba diving experience!
- inspiration, fun, **AND** a commitment to the true spirit of NLP.

*Our NLP Practitioner Programme can be your practical passport for greater effectiveness at work, home and in your social life.*

*Do you want to introduce significant changes into your life?*

Our NLP Practitioner Programme proudly focuses on Learning, and developing the Learner within you. We believe that this is the highest identity. Be a self sufficient Learner and you can go anywhere you now choose.

*Do you want to extend yourself as a Learner?*

NLP is first and foremost an attitude of curiosity, a sense of adventure and a desire to learn. We want to honour the spirit of the original developers and give our learners an undiluted NLP experience. As a result, you will gather the skills and mindset which supports your renewed freedom to explore.

*Do you want more than just good enough?*

Your limitations as a Learner are possibly holding you back, preventing you from calling on your full potential and drawing on all the resources you have within you. You will discover how you can apply your NLP Learning to take you forward into areas of exploration that you have been avoiding, or not previously considered.

*Are you ready for a challenge and something different?*

If you want to stay the same, then this programme isn't for you. If you want to discover what is next for you, then this is just the right place to be! Get ready for a fabulous, illuminating, wow of a time.



*Having the world's best idea will do you no good unless you act on it. People who want milk shouldn't sit on a stool in the middle of a field in hopes that a cow will back up to them.*

**Curtis Grant**

# Programme Content

This internationally recognised 20 day programme is divided into THREE levels. You can opt for the entire programme, or choose to spread your participation over a longer period. Entry into the next level is conditional on completion of the previous one. Outlined below is what you can expect to gain from your participation.

## Influencing Self - 8 days

- ❖ learn the thinking behind the words Neuro Linguistic Programming
- ❖ become aware of how you create the world you live in.
- ❖ know and be who you want to be know clearly what you want - no maybes.
- ❖ discern what is right for you and others.
- ❖ discover at least 20 ways of changing how you feel.
- ❖ increase your understanding and confidence in yourself as a Learner.
- ❖ recognise and learn different ways of working with internal conflict.
- ❖ discover language patterns to shift beliefs.
- ❖ AND test your learning through Scuba Diving!!

## Influencing Others - 8 days

- ❖ be comfortable about being with others - no matter who they are or what they want.
- ❖ learn how to eliminate unproductive behaviours in yourself and others.
- ❖ work with the magic of language to gather precise information and clarify thinking.
- ❖ gather the admirable traits of others and make them your own.
- ❖ use language, stories and metaphors to connect directly with the unconscious mind.
- ❖ AND transfer your learning to other learning projects to discover more about yourself as a learner.

## Integration & Certification - 4 days

- ❖ bring together all your NLP learning to achieve and exceed your set outcomes.
- ❖ let yourself and others know just how much you have learned about yourself and about learning.
- ❖ AND learn some more!



*If you don't change your beliefs, your life will be like this forever. Is that good news?* Douglas Adams

## What is NLP?

**Neuro Linguistic Programming** was developed during the mid 1970's by Richard Bandler and John Grinder. Their work and the work of subsequent developers, gives us astonishing ways of investigating what lies behind our behaviour.

By discovering the structures and the interconnecting systems underpinning everything we do, we can know exactly what to do if we want more of the same, or we know what to amend if we want something different.

NLP is now trained in every continent, and most occupations are represented amongst the learners. Developments are continuing to happen, and understanding of the processes of modelling and how we construct our reality continues to grow.

It is a fascinating field to be part of. The benefits to individuals and communities are significant.



## ....the Northern School?

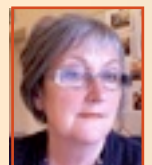
**The Northern School of NLP** was set up to bring training and trainers of the highest quality to the North West. Based in the village of Whalley nestled in the Ribble Valley of East Lancashire, and lying at the very geographical centre of the UK, our venue, Station House Training Centre, provides a home for learning which is second to none. Our secluded labyrinth provides a reflective quiet spot.

The School is committed to the good health of NLP in the UK. It is a founder member of the **Professional Guild of NLP**, and participates at Board level in **NLPtCA** - the psychotherapy body for NLP.

The School has sponsored top named trainers - **Robert Dilts, Judith Delozier, David Gordon, Steve Gilligan, Bill O'Hanlon, Lara Ewing, John McWhirter, James Lawley, Penny Tompkins**. This impressive roll call means that our Learners receive the state of the art thinking from the thinkers themselves!

## and who are the Trainers?

**Fran Burgess**, with a 20 year background in vocational training, is an accredited NLP Trainer by NLP University, Santa Cruz, Ca, has studied with most of the established UK and international trainers,



pursuing her fascination for the process of modelling within NLP, She has developed many original processes and models herself. She is a regular contributor at the NLP Conference. She is a UKCP registered NLP Psychotherapist and has a thriving therapy practice and is on the NLPtCA Board.

**Derek Jackson**, is also an internationally certified NLP Trainer, with a long established background in training and development. Derek applies his understanding and practise of NLP as a Coach and



originator of learning materials, and delights in the potential afforded by the internet and web-based learning. A natural systems thinker, he values the precision NLP allows within the understanding of human experience. A past Chair of the now defunct Association of NLP, (ANLP), he is also a PADI Dive Instructor.

# Programme Details

Embarking on an NLP Practitioner Programme is a significant investment of time, money and potential disruption to home and work life. It is important that you have a clear idea of what would suit you as a Learner. Hopefully these features match your requirements.

## Duration

Our programmes involve 120 hours direct training hours, one 4-day weekend a month, over 5 months

## Venue

We have our own delightful training centre, easily accessible from the M6, M65, M66 and A59, 30 mins from the West Coast railway, and 45 mins from Manchester airport. Details of accommodation and directions can be found on our website.

## Facilities

Car parking is available. Light refreshments are provided all day. Lots of lunchtime options are available locally.

## Approach

Our training is noted for its rigor, informality and enjoyment. The emphasis is on quality, skill development and exploration.

## Group Size

Numbers are restricted to a max of 24 learners.

## Entrance Requirements

Participants are expected to be over 21 years of age.

## Rates

If you can reclaim VAT, then we charge the Full Rate. Otherwise, if you sign up for the complete programme, we offer discount of 17.5%, so that everyone effectively pays a similar amount.

All prices include VAT	Corporate	Individual
<b>Full Programme</b>	£2,350	£2,000
<b>Influencing Self</b>	£900	
<b>Influencing Others</b>	£900	
<b>Certification</b>	£550	

## Payment

Payment can be through credit cards, cheques. Staged payments can be made through Standing Orders and post dated cheques, on arrangement.

## Registration Deposit

Registration is secured once a non refundable deposit of £150 is received and payment details confirmed.

## Concessions

We offer concessions to those holding an existing short course Practitioner Certificate, to family groups, students and others with special circumstances.

## Terms and Conditions

Our Terms and Conditions, published on the reverse of our invoice, outlines the requirements for bookings, payment and cancellations.

# Registration Form

I would like to register for the following NLP & Learning Practitioner Programme

## Autumn 2010

17-20 Sept, 8-11 Oct, 19-22 Nov,  
3-6 Dec. 14-17 Jan 2011

## Spring 2011

18-21 Feb, 18-21 Mar, 15-18 Apr,  
13-16 May, 17-20 June 2011

## Autumn 2011

23-26 Sept, 21-24 Oct, 18-21 Nov,  
9-12 Dec, 13-16 Jan 2012

**Please note: All days run between  
10.00am - 6.00pm**

- I/My organisation is VAT registered.
- I am over 21 years of age.
- I have been offered a discount of \_\_\_\_\_
- I am enclosing a £150 non refundable deposit.
- I have read and agree to the Terms and Conditions ([www.nlpand.co.uk/terms-and-conditions/](http://www.nlpand.co.uk/terms-and-conditions/))

## Personal Details

Name

Address

Post Code

Phone: Home

Mobile or Work

Email

Invoicing Contact Name and Address ( if different)

How did you get to hear about this programme?

- Website     Press
- Personal Contact (please name)
- Other (please say \_\_\_\_\_)

Occupation

*Please send this form and your deposit to:*

**The Northern School of NLP,  
Station House Training Centre, Station Road,  
Whalley, CLITHEROE, BB7 9RT**

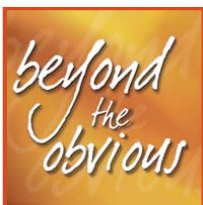
# What Others Say

Here are just some of the comments found on our website:

- I came with high expectations and they have been more than exceeded. Lindsay - Matron
- This is a course that opens your eyes to all the possibilities in life that are out there. Michael - Trainer
- If you want a nice, easy relaxing course, which will allow you to study NLP as an intellectual exercise, without having any other impact on you - then stay well away from this course! Trish - Accountant

- This course will change your life, your beliefs in yourself and expectations for the future. Helen - HR Manager
- To anyone who ever aspired to create a brighter future for themselves - get yourself on this programme. It could change your life forever! Barbara - Student Teacher
- I would never in a million years have thought that in 5 months I would move on so far and so fast. Bill - Student Adviser Manager
- The most valuable course I have ever been on. Kim - IT Business Analyst

- I have worked in a top FTSE company for nearly 30 years, and I have spent the last 6 years as a Training Design Manager, so I have been on the 'receiving' and 'giving' end of a lot of training in my time. This has been the best and most impactful I have ever had. John - Training Design Manager



For further information visit our extensive website [www.nlpand.co.uk](http://www.nlpand.co.uk)  
And if you have any queries, please contact our office. Phone **01254 824504** or email [admin@nlpand.co.uk](mailto:admin@nlpand.co.uk)

The Northern School of NLP, Station House Training Centre, Station Road,  
Whalley, Clitheroe, BB7 9RT, E Lancs



## The Professional Guild of NLP

As one of the founder members of The Professional Guild of NLP, we subscribe to the belief that NLP is a skill that requires practice and knowledge of its underpinning principles.

Accordingly, along with all the other Training Providers within the Guild, we willingly offer a minimum of 120 hours basic Practitioner Training.

We incorporate the common syllabus, We adhere to the Guild's Code of Practice and Quality Assurance System.

And in the unlikely event that you are dissatisfied with our Services, you are able to have your complaint considered by the Guild's Complaints' Process.

**All our graduates are eligible to become registered Individual Members, which marks out their commitment to learning from quality training.**



[www.professionalguildofnlp.com](http://www.professionalguildofnlp.com)



## Neurolinguistic Psychotherapy and Counselling Association

The School is an approved provider of psychotherapy training to include Practitioner, Master Practitioner and Advanced Modules towards attainment of the Diploma in Neurolinguistic Psychotherapy.

After completing all the quantitative and qualitative requirements of NLPtCA, trainee therapists can apply for full accreditation as NLPt Psychotherapists. NLPtCA then forwards the individual for registration with UKCP - United Kingdom Council for Psychotherapy, one of the official registers of psychotherapists, recognised by the government



[www.nlpcta.org.uk](http://www.nlpcta.org.uk)



*Only those who will risk going too far can possibly find out how far one can go. T. S. Eliot*